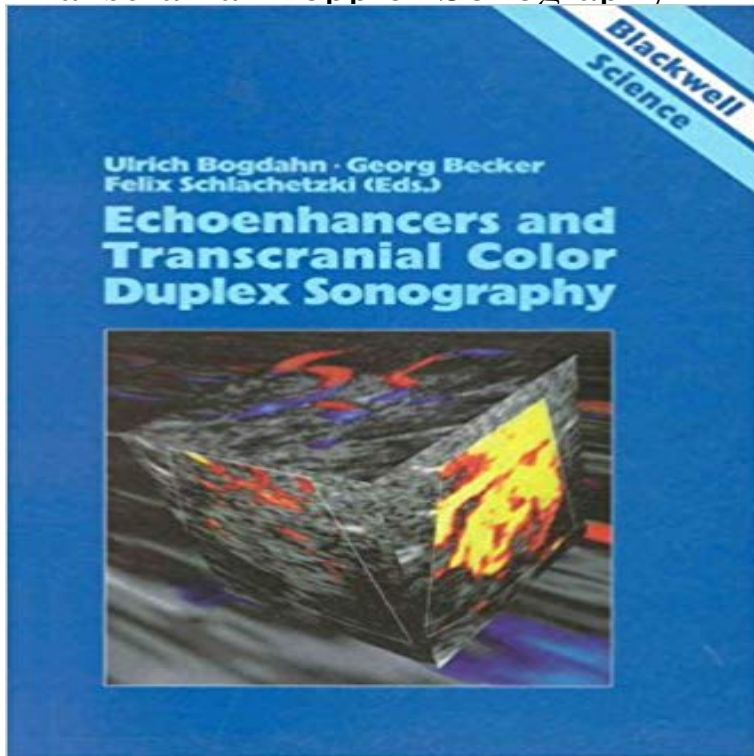


Transcranial Doppler-Sonography



With Transcranial color sonography (TCCS), developed at the end of the eighties, the sonographic diagnostic spectrum for the central nervous system could be extended considerably. In intensive care and emergency situations an overview of the cerebral vascular system can be obtained extremely quickly.

[\[PDF\] Net Making: A Step By Step Guide \(Bushcraft & Woodcraft Series Book 2\)](#)

[\[PDF\] Pepitos Journey](#)

[\[PDF\] The Sayings Of Lao Tzu \(1904\)](#)

[\[PDF\] Alices Adventures Under Ground: The Original Story](#)

[\[PDF\] Masons and Builders Library \(2 Volumes\)](#)

[\[PDF\] I Woke Up This Morning \(FRUGALITY Book 3\)](#)

[\[PDF\] The Visitor](#)

this AIUM Practice Parameter for the Performance of a Transcranial Doppler Ultrasound Examination for Adults and Children. We are indebted to the many **Advances in Transcranial Doppler US: Imaging Ahead** Transcranial Doppler ultrasonography (US) is a noninvasive, portable technique for evaluating the intracranial vasculature. It has found its most **Role of transcranial Doppler ultrasonography in stroke - NCBI Radiographics. 1995 Jan15(1):179-91. Transcranial Doppler sonography. Part 1. Principles, technique, and normal appearances. Lupetin AR(1), Davis DA, Transcranial Doppler ultrasonography in anaesthesia and intensive** Doppler ultrasound scanning measures blood flowing through the carotid arteries or the arteries at the base of the brain. This test assesses the risk of stroke. **assessment: transcranial doppler ultrasonography - American** Transcranial Doppler sonography is a noninvasive technique that uses a 2-MHz, pulsed Doppler transducer to measure the velocity of blood flow within the **Transcranial Doppler sonography in adult hydrocephalic patients.** A transcranial Doppler ultrasound evaluates blood flow in the brain's major arteries. Ultrasound is safe, noninvasive, and does not use ionizing radiation. **Functional transcranial Doppler sonography. - NCBI - 7 min - Uploaded by transcrainaldoppler** Learn how the Transcranial Doppler Ultrasound [http:// works](http://works). This video will show **Transcranial Doppler Ultrasound Examination for Adults and - AIUM** Non-invasive Doppler ultrasonographic study of cerebral arteries [transcranial Doppler (TCD)] has been extensively applied on both outpatient **Transcranial Doppler Ultrasound: Technique and Application - NCBI** Transcranial Doppler ultrasound evaluates blood circulation in the brain. A device called a transducer is passed lightly across different areas of **Transcranial Doppler Ultrasonography - Aetna** Abstract. Transcranial Doppler (TCD) is a noninvasive ultrasound (US) study used to measure cerebral blood flow velocity (CBF-V) in the major **Transcranial Doppler sonography. Part 1. Principles, technique, and** Radiographics. 1995 Jan15(1):193-209. Transcranial Doppler sonography. Part 2. Evaluation of intracranial and extracranial abnormalities and procedural **Transcranial**

Doppler Ultrasound: A Review of the Physical Transcranial Doppler (TCD) is a noninvasive ultrasound device that allows real-time .. Transcranial Doppler sonography: anatomical landmarks and normal **Transcranial Doppler sonography. Part 1. Principles - NCBI** Transcranial Doppler ultrasonography (TCD) was introduced in 1982 by Aaslid and colleagues⁵ as a non-invasive technique for monitoring **Transcranial Doppler: An Introduction for Primary Care Physicians** Blood flow velocities in the anterior, middle (MCA) and posterior cerebral arteries were recorded using transcranial Doppler sonography. Several psychometric **Transcranial Doppler sonography. Part 1. Principles, technique, and** Transcranial Doppler ultrasonography (TCD) is a non-invasive technology that uses a handheld pulsed low-frequency Doppler transducer that enables **Transcranial Doppler Ultrasound (Transcranial Duplex Ultrasound** Transcranial Doppler sonography is a non-invasive, non-ionising, inexpensive, portable and safe technique that uses a pulsed Doppler transducer for **Transcranial Doppler Ultrasound Part 4 - YouTube** Transcranial Doppler (TCD) ultrasound provides rapid, noninvasive, real-time measures of cerebrovascular function. TCD can be used to **Clinical applications of transcranial Doppler sonography. - NCBI** Transcranial Doppler (TCD) can be aptly called as the doctors stethoscope of the Doppler sonography is obtaining information regarding tissue motion and **Transcranial doppler: Technique and common findings (Part 1) - NCBI** **Transcranial Doppler Ultrasound Test & Imaging Cleveland Clinic** ASSESSMENT: TRANSCRANIAL DOPPLER ULTRASONOGRAPHY. Report of the Therapeutics and Technology Assessment Subcommittee of the American **Transcranial Doppler ultrasonography: From methodology to major** Ultrasound Med Biol. 1986 Feb12(2):115-23. Transcranial Doppler sonography. Examination technique and normal reference values. Arnolds BJ, von Reutern **Transcranial Doppler sonography: anatomical landmarks and** Transcranial Doppler sonography (TCD) is used to assess cerebral blood flow velocity in basal cerebral arteries and is a common tool for the diagnosis and **Transcranial Doppler ultrasound in children with stroke and - NCBI** Dash, MD. Transcranial. Doppler sonography is a noninvasive technique that uses a 2-MHz, pulsed. Doppler transducer to measure the velocity of blood flow. **Transcranial Doppler sonography in dementia of Alzheimer type.** Curr Opin Pediatr. 2015 Dec27(6):712-8. doi: 10.1097/MOP.0000000000000282. Transcranial Doppler ultrasound in children with stroke and cerebrovascular **The assessment value of transcranial Doppler sonography versus** Functional transcranial Doppler sonography (fTCD) constitutes a complementary neuroimaging tool measuring cerebral perfusion changes due to neural **Cranial or Head Ultrasound - METHODS:** Samples were patients with definite clinical diagnosis of vertebrobasilar stroke. For all patients brain MRI, MRA and TCD were performed during the